

Grand Victorian

Model #2725



Among its many features, this inspiring home greets family and friends with an open hardwood foyer and has a rear wrap-around deck for outdoor enjoyment.

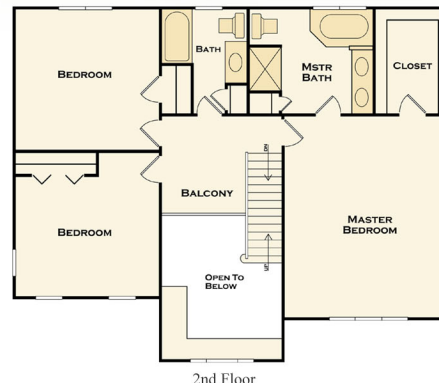
Its kitchen features granite countertops and a 6' island counter, and opens to a 14'x14' breakfast area with a custom bay window. Along with generously-sized, well-designed family, dining and study rooms.

The home features a second-floor master bedroom suite with whirlpool, double-bowl vanity and walk-in closet.

A 2-car garage and walkout basement add to the comfortable living experience this home affords.

2,725 Square Feet

3 Bedrooms 2 Car Garage
2 1/2 Bathrooms



Amenities:

- Spacious Bedrooms
- Hardwood Foyer
- Wrap-Around Deck
- Whirlpool Tub
- Double-bowl Vanity
- Walk-In Closet
- Custom Bay Window
- Study Rooms
- Walkout Basement
- Granite Countertops
- Island Counter.
- Two Car Garage

1-508-677-9234 | www.bristolpacific.com