

Custom Colonial

Model #FP2608



This comfortable home utilizes space well for comfort and enjoyment.

Among its features, it has 3 bedrooms on the second floor, a master bathroom with whirlpool tub and walk-in closet, and a 20'x24' family room with cathedral ceiling and gas fireplace.

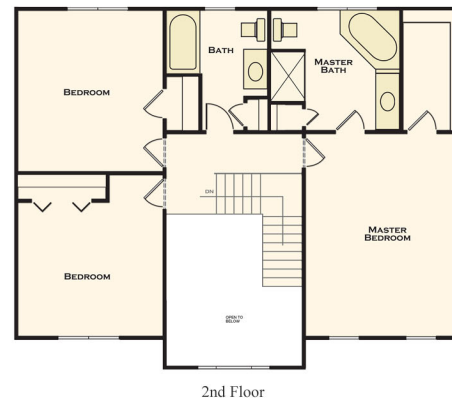
An open foyer, first-floor laundry, hardwood floors and central AC continue the list of included amenities.

Kitchen features include granite counter tops and a 6' island counter.

The home also has a 2-car drive-under garage.

2,608 Square Feet

3 Bedrooms 2 Car Garage
2 1/2 Bathrooms



Amenities:

- Spacious Bedrooms
- Whirlpool Tub
- Walk-in Closet
- Cathedral Ceilings
- Gas Fireplace
- Open Foyer
- First-Floor Laundry
- Hardwood Floors
- Central Heat & Air
- Granite Countertops
- Island Counter
- Two Car Garage

1-508-677-9234 | www.bristolpacific.com