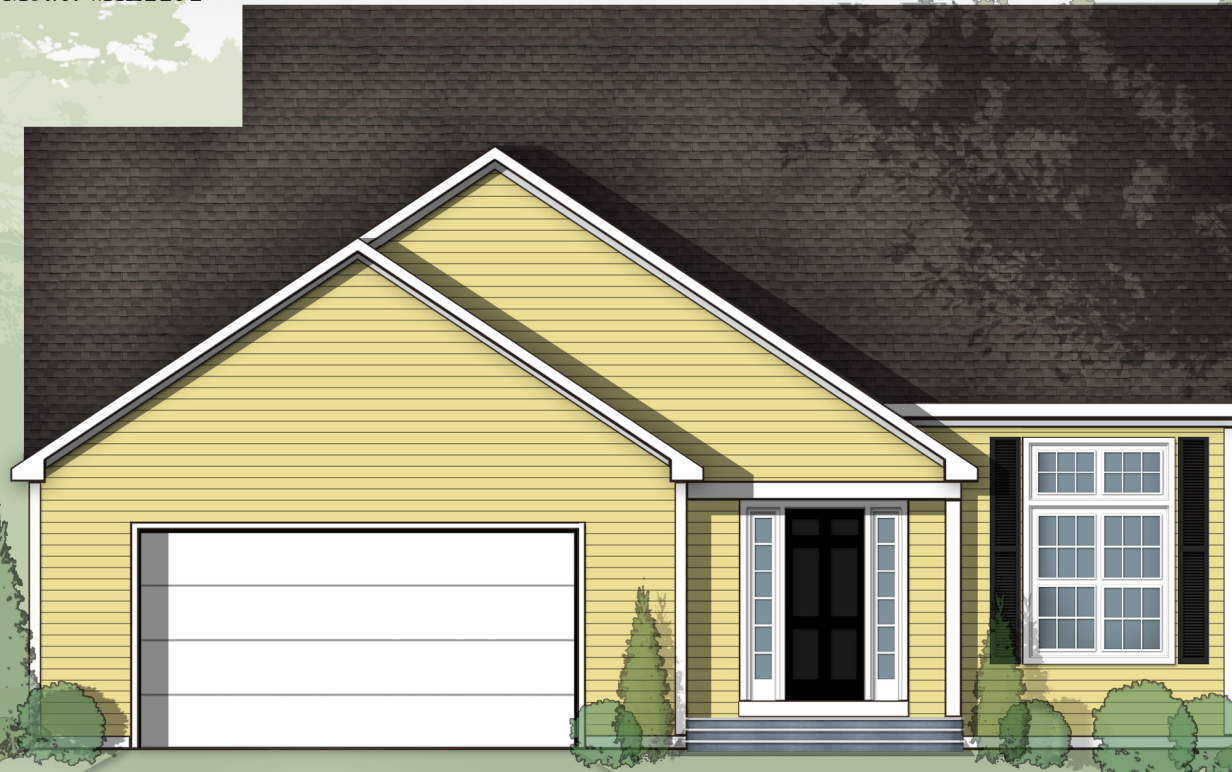


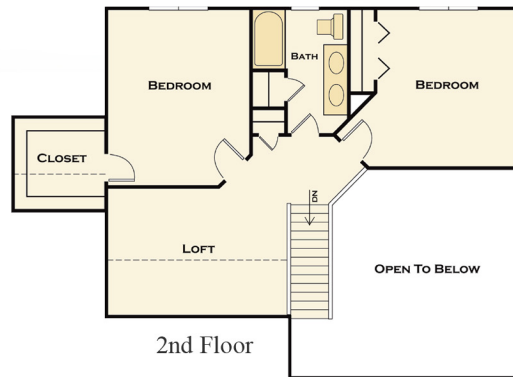
Contemporary Cape

Model #HE2252



2252 Square Feet

3 Bedrooms 2 Car Garage
2 Bathrooms



This is a three bedroom, two bath home.

First floor features a large bedroom with a large walk in closet, large family room with cathedral ceilings and laundry room.

Second floor offers two bedrooms and spacious loft.

Kitchen features includes granite countertops and 5' island and separate breakfast area.

Hardwood floors with carpeting in the bedrooms, tile in the baths. Cherry vanities with granite countertops and under mount sinks complete both baths in this lovely home.

Amenities:

- ***Spacious Bedrooms***
- ***Walk-in Closet***
- ***Cathedral Ceilings***
- ***First-Floor Laundry***
- ***Hardwood Floors***
- ***Central Heat & Air***
- ***Granite Countertops***
- ***Island Counter***
- ***Two Car Garage***

1-508-677-9234 | www.bristolpacific.com